

## Down Hole Sucker Rod Monitoring Tool

- Easily deployed
- Ideal for monitoring Corrosion at phase points in the well.
- Can be deployed with other tools (no separate run required)
- Can be run above, below, or between two tools.
- No Battery required.
- No Special handling required in the field.
- NACE certified report provided at the conclusion of the run.
- Minimal Cost.

- Can also be run in tandem with each other (as many as you like).



### **Corr Science Inc.**

Bay 22, 1511 Highfield Cr. S.E.  
Calgary, Alberta, Canada, T2G 5M4  
Office: (403) 204 2080  
Fax: (403) 204 2096  
info@corrscience.com

# Down Hole NACE Sample Report



Report 071221ENT\_Cjn

November XX, XXXX  
XXXXXXXXXXXXXXXX

Attention:  
Re: Corrosion Monitoring Analysis Report

Dear Sir,

Please find the attached data detailing the results of the internal corrosion monitoring performed for XXXXXXXXXXXX in the XXXXXXXXXXXX field. Please note that historical graphs have been provided.

Table 1 - XXXXXXXXXXXX

Location	Serial No.	Position	General Corrosion Rate (mpy)	Pitting Corrosion Rate (mpy)	Pt Depth (mils)	Exposure Length (days)
Section 21 Group	0825	1 O'clock - Flush	1.08 mpy LOW	NONE OBSERVED	NONE OBSERVED	111
Section 17 Test	1722	1 O'clock - Flush	0.135 mpy LOW	NONE OBSERVED	NONE OBSERVED	111
4-20 Test	1728	1 O'clock - Flush	0.554 mpy LOW	NONE OBSERVED	NONE OBSERVED	111
Section 21 Test	1720	1 O'clock - Flush	0.653 mpy LOW	NONE OBSERVED	NONE OBSERVED	111
15-17 Group	0823	1 O'clock - Flush	<b>3.028 mpy SEVERE</b>	<b>11580 mpy SEVERE</b>	<b>354 mils</b>	111
Section 17 Group	0820	1 O'clock - Flush	0.291 mpy LOW	3.887 mpy LOW	1.16 mils	111

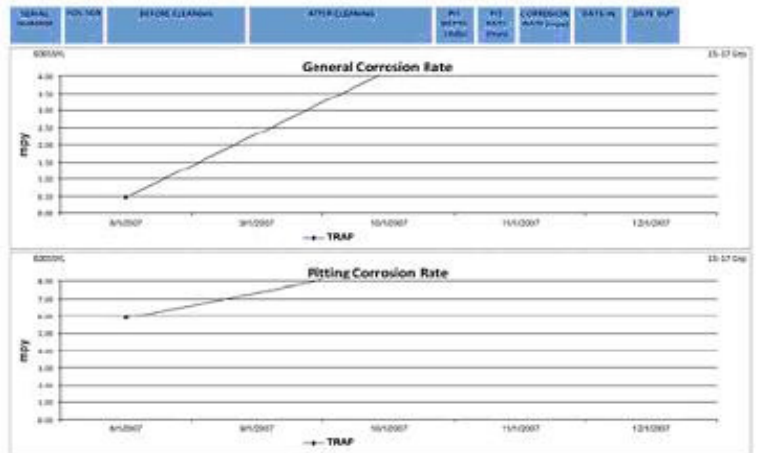
Table 2 - Qualitative Categorization of Carbon Steel Corrosion Rates for Oil Production Systems

NACE RP0275-2006 Standard	General Corrosion Rate (mpy)	Maximum Pitting Rate (mpy)
LOW	<1.0	<5.0
MODERATE	1.0 - 4.9	5.0 - 19
HIGH	5.0 - 10	6.0 - 19
SEVERE	>10	>19

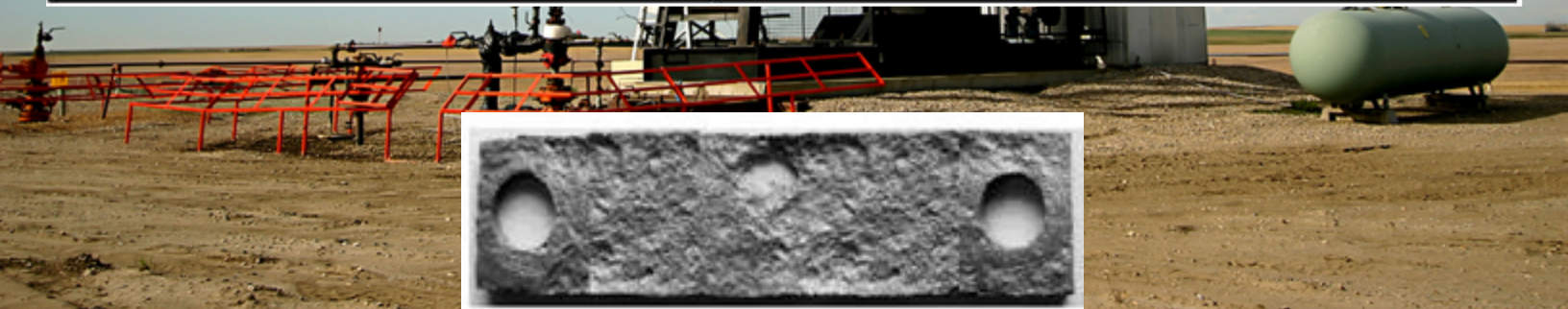
Please feel free to give me a call if you have any questions or concerns.

Sincerely,

Corr Science



SERIAL NUMBER	POS. NO.	BEFORE CLEANING	AFTER CLEANING	PRE-DEPTH (mils)	POST-DEPTH (mils)	CORROSION RATE (mpy)	DATE IN	DATE OUT
0823	18	1 O'clock - Flush	1 O'clock - Flush	0.34	11.68	3.03	18-Aug-07	28-Oct-07
0817	18	1 O'clock - Flush	1 O'clock - Flush	0.14	0.91	0.17	18-May-07	28-Aug-07



Sample of Down Hole Coupon

**Corr Science Inc.**  
 Bay 22, 1511 Highfield Cr. S.E.  
 Calgary, Alberta, Canada, T2G 5M4  
 Office: (403) 204 2080  
 Fax: (403) 204 2096  
 info@corrscience.com